

# Options

## **Create Bitmaps**

If you select the create bitmaps option, the program will save the Icons in BMP or Bitmap format.

## **Favorite directory**

You may enter one favorite directory and each time you open a file the program will use this information to start the file open command.

## **Stay on top**

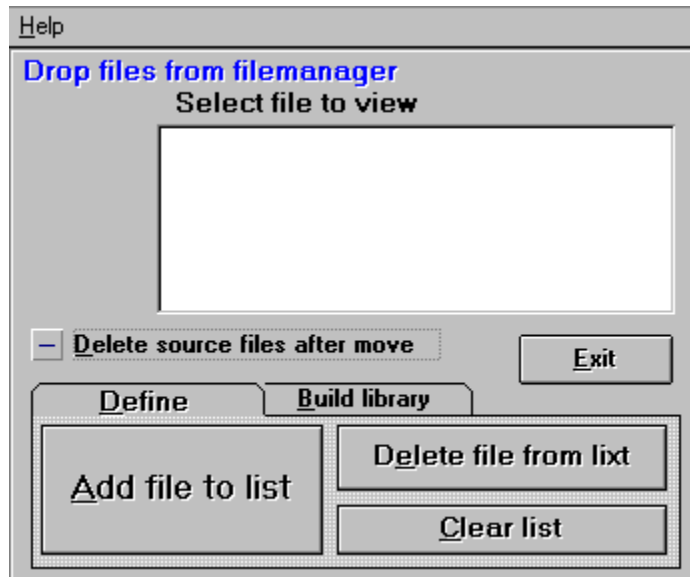
Select this option to make the screen stay on top of other applications.

# Extract



Icon extract will read any executable file or windows icon dll file and allow you to extract and save your choice of icons. The above picture show a typical display of 48 icons found in a library or dll file. Select an icon by clicking once with your mouse and you will be prompted for filename to save the icon.

# Create DLL



**You may enter files to be included into a new DLL Library in one of several ways,**

1) you may select them one at a time with the add file button, 2) you may drag and drop entire lists of ICO files from the filemanager, Minimize the form and then select an Icon from your filemanager display, drag it over to the icon and release it. You may select more than one file from the filemanager by using the shift key to define the end of a list of files to drag and drop.

## **Filename for new library**

You may name the file with any legal MSDOS filename, lib.DLL, lib.NIL, lib.ICL I recommend you use the ICL extension.

## **Drag and drop from filemanager**

When building icon libraries you may drag and drop from the filemanager one or more files. Minimize the Icon Extract window and drop a list of files on it from the filemanager window, using your mouse select files from the window, see filemanager help for more information on selection.



# Blind Mellon Software



**Extract Icons**

**Options**

**Libraries of record**

**Create DLL Libraries**

**Registration**

**Other Products**

Blind Mellon Software all rights reserved.

# Libraries

Icon Extract will remember the libraries you have opened in the past so that you might access them thru the windows in the top right hand corner of the screen.

## Libraries of record

Icon Extract will maintain a list of all library files that you have opened, once a library has been opened you may select it from the library list in the upper right corner of the display. You may clear the list from time to time if desired by using the clear libraries of record option.

Blind Mellon Software all rights reserved.



